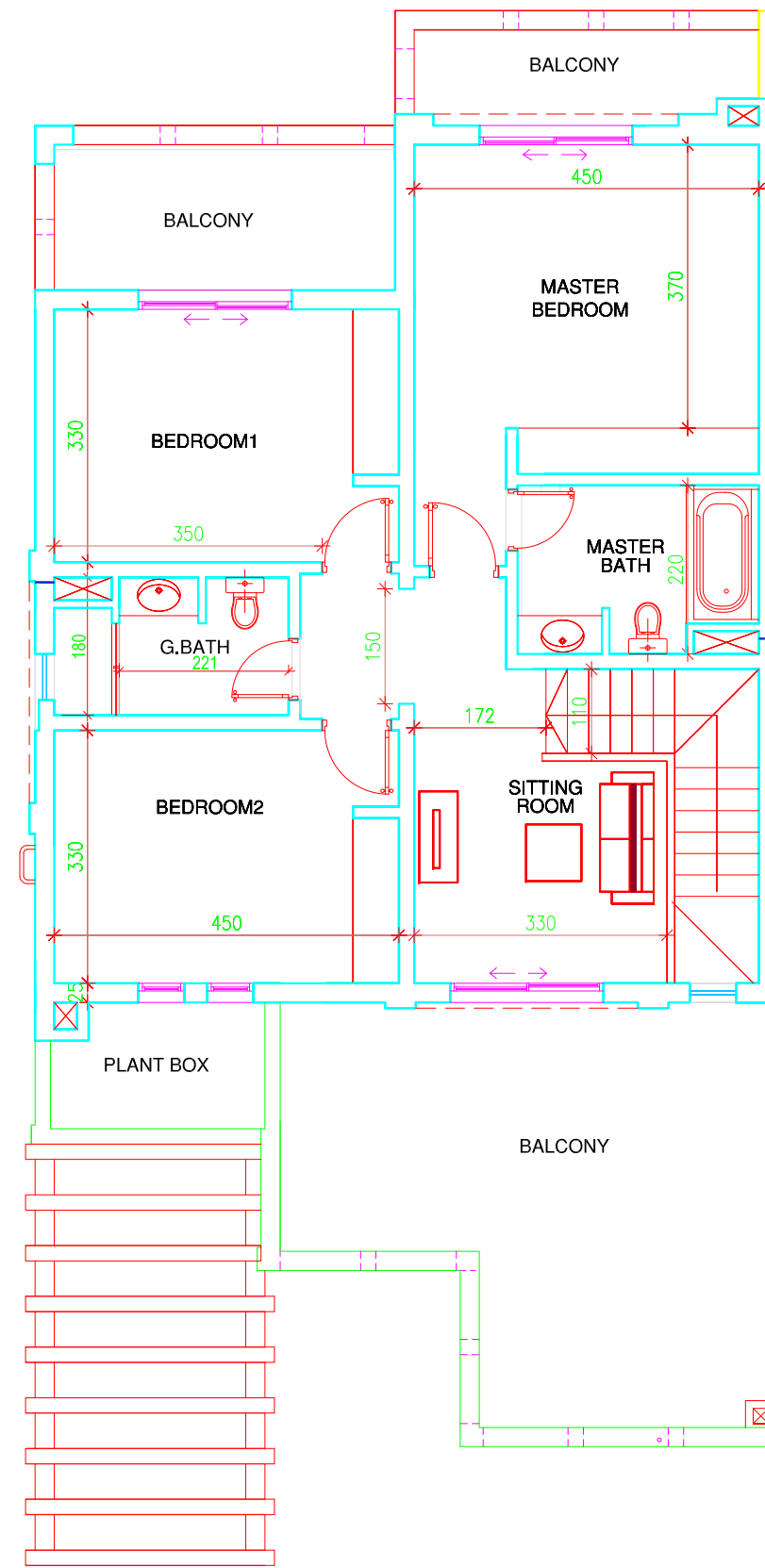


GROUND FLOOR PLAN



FIRST FLOOR PLAN



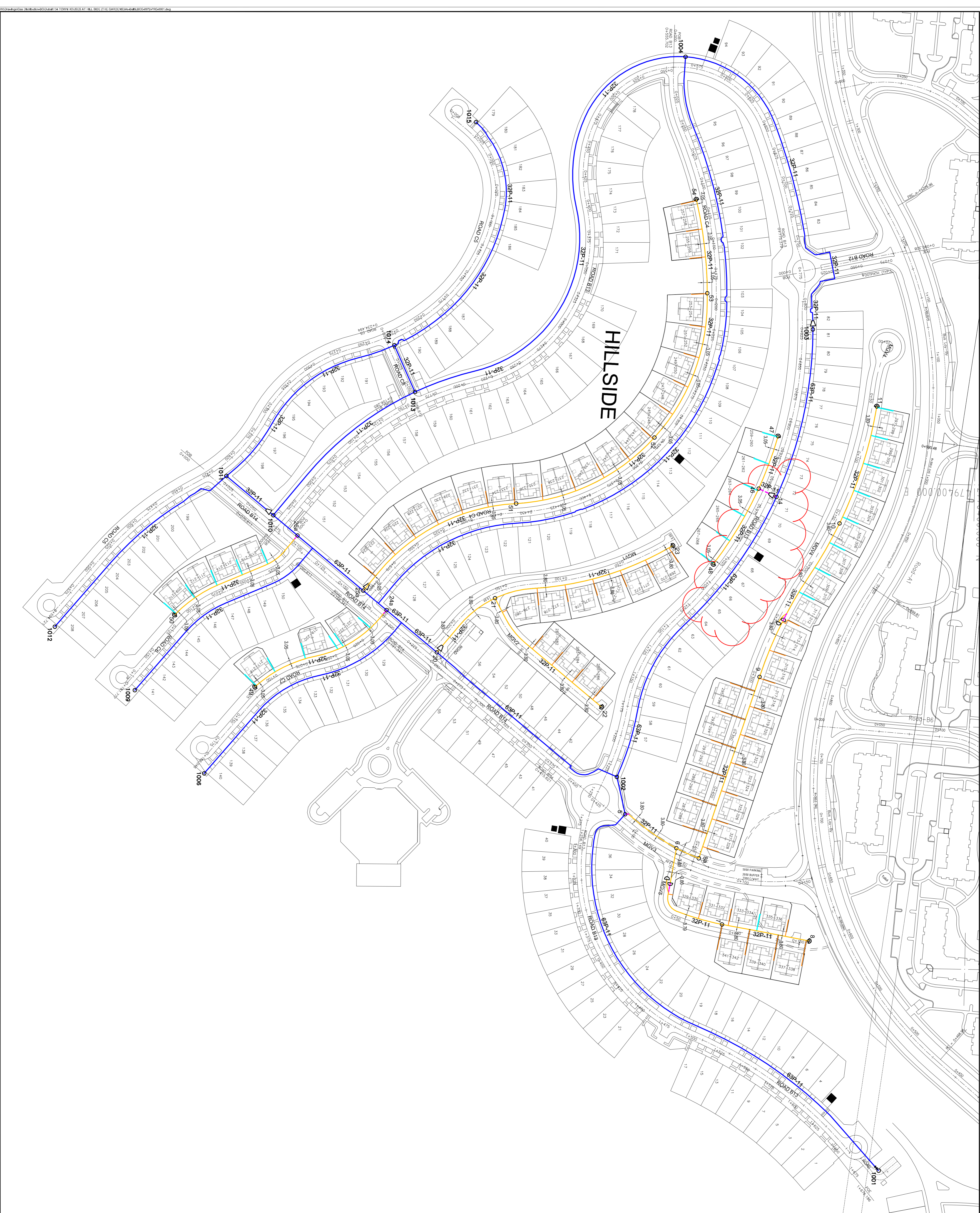
Ground Floor plan for 3 and 4 bedroom Villa



First Floor plan for 3 and 4 bedroom Villa

Built up size for 3 b/r: 299/69 sq meters (3224.6 sq. ft)

Built up size for 4 b/r: 327.61 sq. meters (3521.8 sq. ft)



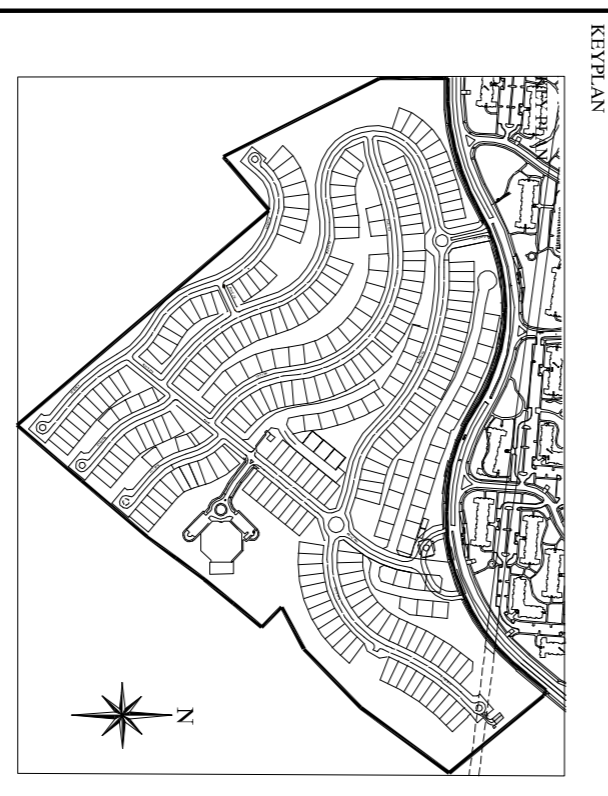
LEGEND

- EXISTING GAS MAINS
- NEW GAS MAINS INSTALLED
- PROPOSED GAS PIPE - PE
- PIPE DIAMETER (mm), MATERIAL AND SDR
- D REDUCER
- D END CAP
- GAS PIPE LINE IN SLEEVE
- NODE AND NODE NUMBER
- 250 PE GAS SERVICE-INSTALLED
- 250 PE GAS SERVICE-PROPOSED

NOTES

- ALL INFORMATION CONTAINED IN THIS DRAWING IS INDICATIVE ONLY, BASED ON THE LATEST INFORMATION AVAILABLE.
- ALL DIMENSIONS TO BE VERIFIED ON SITE AND APPROVED BY THE ENGINEER.
- DO NOT SCALE FROM THIS DRAWING.
- THIS DRAWING SHOULD BE READ IN CONJUNCTION WITH RELEVANT INDIVIDUAL DRAWINGS AND OTHER ARCHITECTURAL, MECHANICAL SPECIFICATION.
- ALL DIMENSIONS ARE IN METERS UNLESS OTHERWISE INDICATED.
- GAS MAINS LOCATION CORRELATE WITH CROSS SECTION DRAWINGS (JDX0087H/ISP/P173).
- THIS GAS ROUTE MAIN DRAWING BASED ON 134 TOWN HOUSES AT GARDENS LABEL ALMAMSTER PLAN DATE 06-08-2007

MINIMUM DEPTH OF COVER:
 MAINS - 1.0 METER
 SERVICES - 0.8 METER



CLIENT
NAKHEEL



CONTRACTOR
JALAL AL-DIN LULUAIN BOGAS

PROJECT
 134 TOWN HOUSES
 AT GARDENS (LABEL ALL)

TITLE
**GAS NETWORK INSTALLATION
 PROGRESS
 (HILL SIDE)**

DRAWING NO.	DATE	REVISION
LBCG-0972-PRG-0001		
A1	PR	WORK PACKAGE
	CIVIL	MAINS
	NTS	

DATE
August 31, 2011